

GummiHaj

This is a free template. This was made by me (johntaro) to make a latex version of Blahaj as a fan project to see if i could make an inflatable shork. Please do not sell this. If you bought this somewhere you were scammed. Please use this responsibly for making gummihaj for your friends and family.

If you enjoy this. Go on tiktok and give me a follow :) (johntaro.art on tiktok)

The colors you will need:

- Black (radical rubber S10)
- Orange (Radical rubber S50)
- White (Radical rubber S181)
- light pink (baby pink : Radical rubber S160)
- Blue/metalic/peacock color (Radical rubber S121,S111, M41)

You should print these pages in A4

If you cannot print in A4, There is a PNG you can cut up yourself. it should be provided with the zip file you got from my site. If you do not have it , you can get it on my website

You should combine the main body pieces as one template before cutting, the main body and bottom of the shark should be once piece but these are split into parts for easy printing.

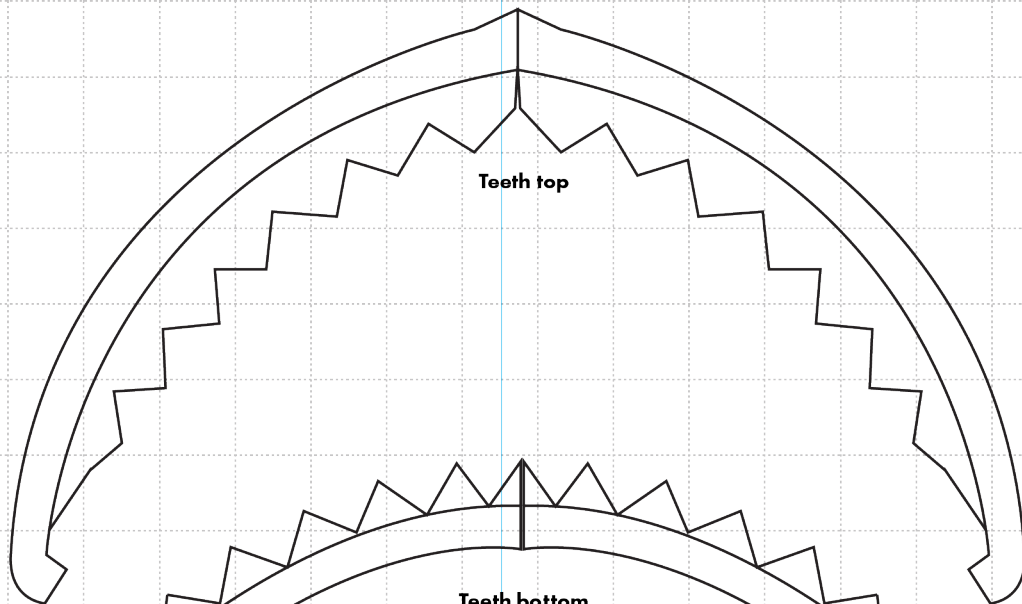
All grids lines are 10x10mm in size.

The dashed lines are seam lines. The seams should be on all parts.

Boundinlatex suggested duplicating the Fin Side Top and adding a seam for the bottom part.

It took me about 6-9 hours to make the first two. Expect some trial an error.





Teeth top

1x In white

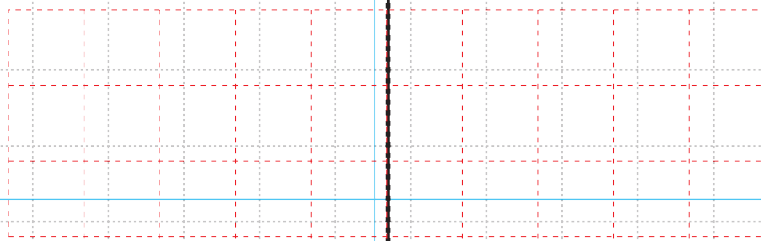
Teeth bottom

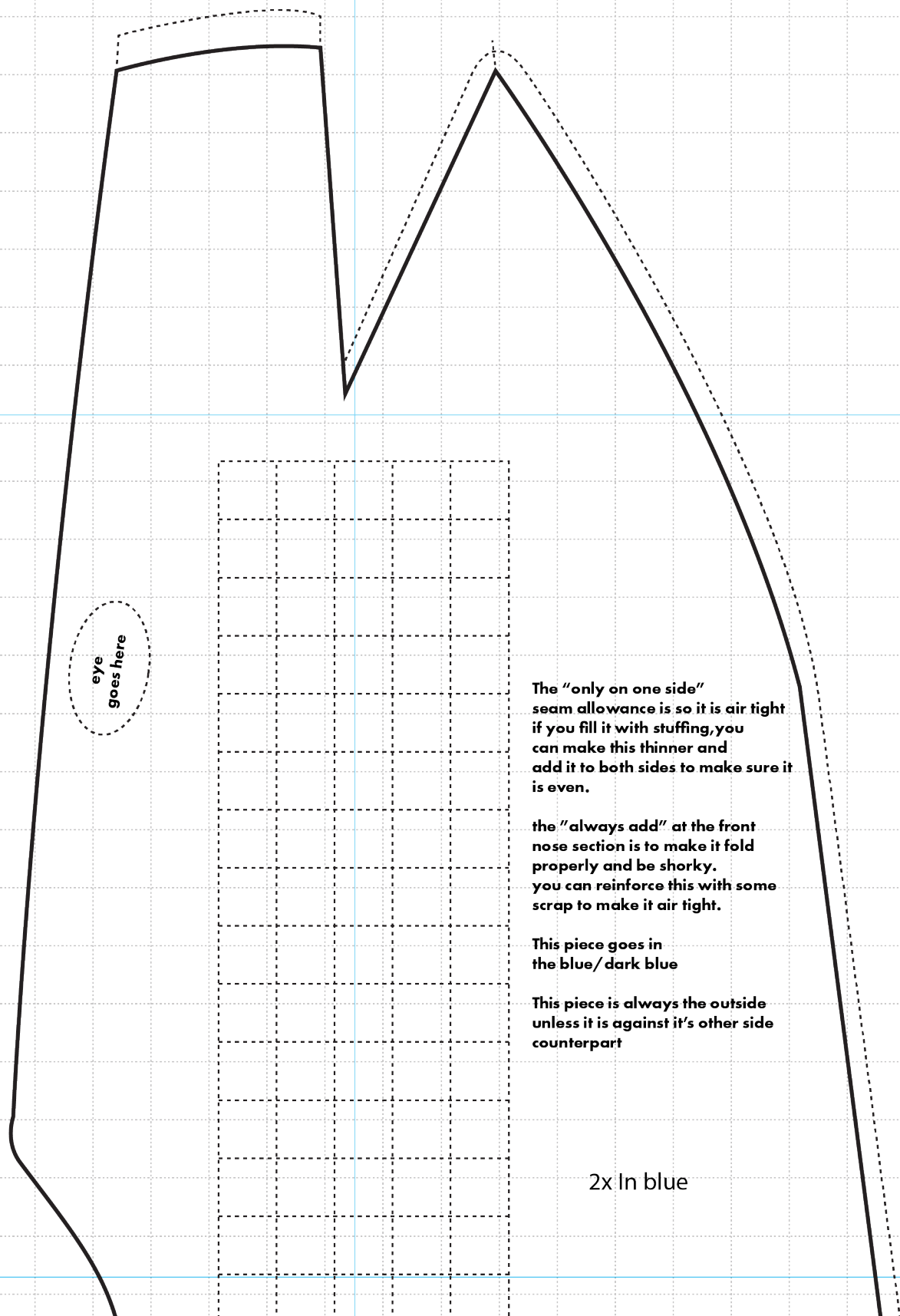
1x In white

1x In white

COLOR : White
this always goes on the inside

Belly





eye
goes here

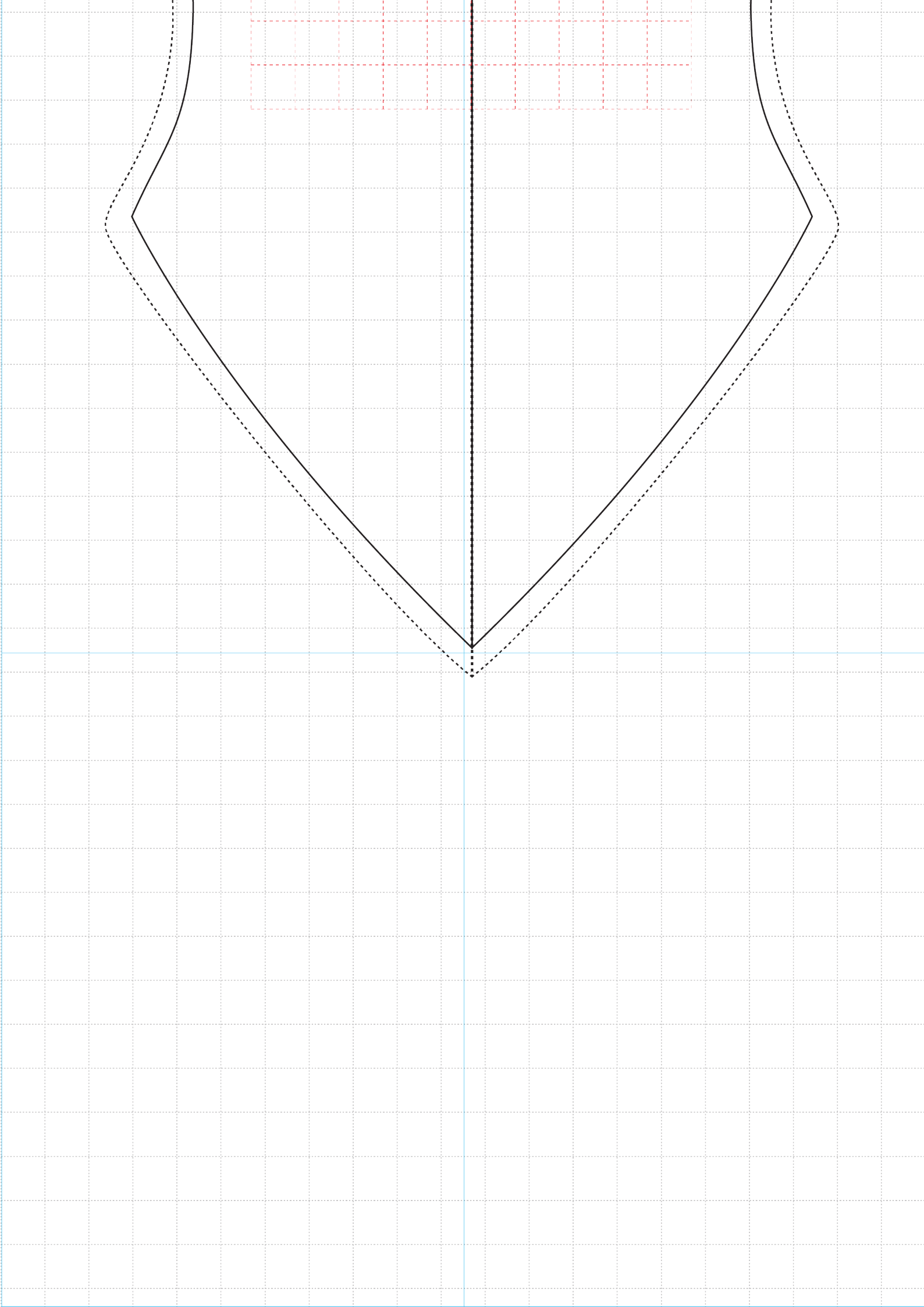
The "only on one side"
seam allowance is so it is air tight
if you fill it with stuffing, you
can make this thinner and
add it to both sides to make sure it
is even.

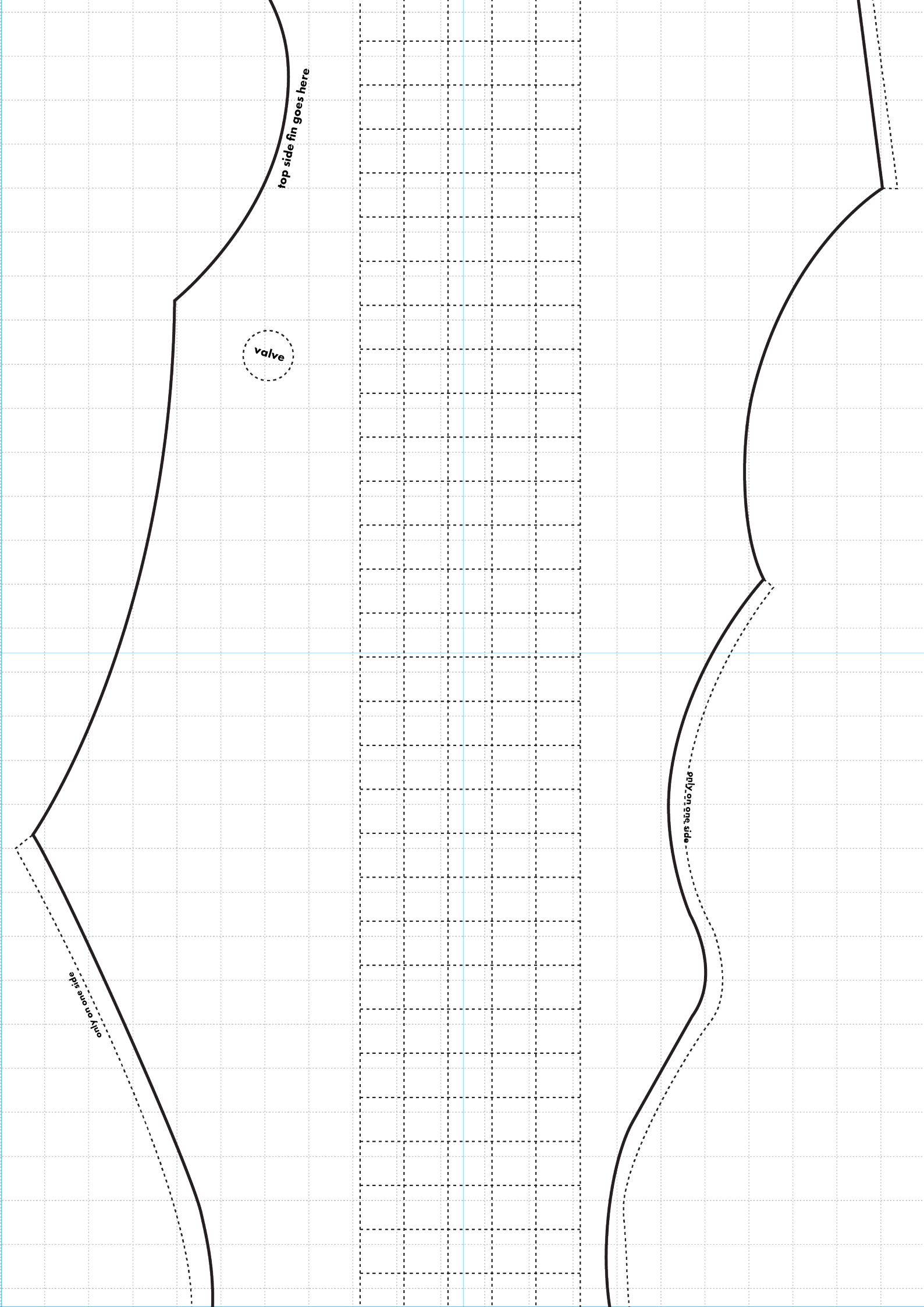
the "always add" at the front
nose section is to make it fold
properly and be shorky.
you can reinforce this with some
scrap to make it air tight.

This piece goes in
the blue/ dark blue

This piece is always the outside
unless it is against it's other side
counterpart

2x In blue





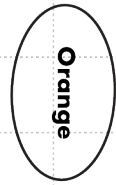
top side fin goes here

valve

only on one side

only on one side

Eye Parts



left eye



right eye

